

## **The Urinary System**

- 1.
- 2.
- 3.
- 4.

### **RENAL PARENCHYMA**

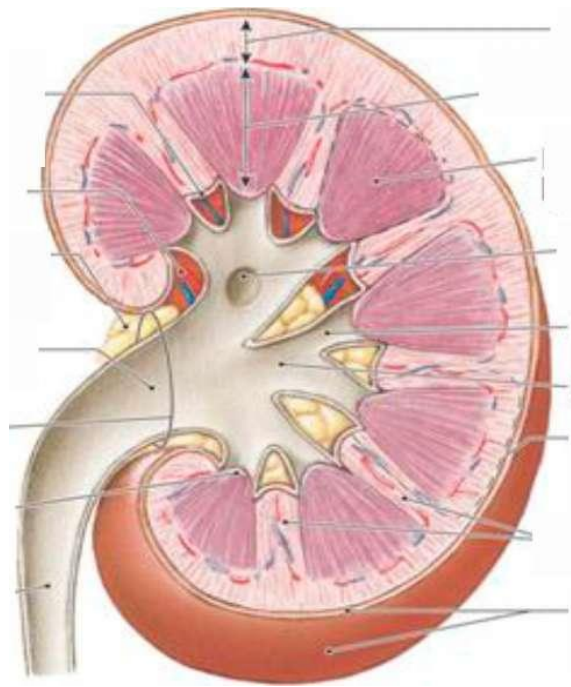
1. RENAL PYRAMIDS is
2. PYRAMID + OVERLYING CORTEX =
3. POINT OF PYRAMID =
4. MINOR CALYX =
5. MAJOR CALYX =
6. RENAL PELVIS =
7. URETER

### **KIDNEY FUNCTIONS**

- 1.
- 2.
- 3.
- 4.
- 5.
- 6.
- 7.
- 8.
- 9

## Urinary System Function

- 1.
- 2.
- 3.
- 4.
- 5.
- 6



### Cortex is

- 1.
- 1a.
- 1b.
- 2.
- 2a.
- 2b.
- 2c.

**Medulla is**

- 1.
- 1a.
- 1b.
- 1c.
- 2.

**NEPHRON is**

~ NUMBER

3 MAIN PARTS:

1.

1A.

1B.

2.

2A.

2B.

2C.

2D.

2E.

2F.

## RENAL CORPUSCLE

- 1.
- 2.
- 3.
- 4.
- 5.

## RENAL TUBULE

- 1.
- 2.
- 3.
- 4.
- 5.
- 6.
- 7.
- 8.

## URINE FORMATION OVERVIEW

- 1. \_\_\_\_\_ →→→→ 2.
- FOUR STEPS:
  - 1.
  - 2.
  - 3.
  - 4.

## **Renal Corpuscle is**

- (1) (2)
  - A.
  - B.
  - C.
  - D.

## **Proximal convoluted tubule**

- 1.
- 2.
- 3.

## **Distal convoluted tubule**

- 1.
- 2.
- 3.

## **Collecting tubules / ducts**

- 1.
- 2.
- 3.
- 4.
- 5.
- 6.

## Juxtaglomerular apparatus

- 1.
- 2.
- 3a.
- 3b.
- 3c.

## Juxtaglomerular apparatus

- macula densa –
- juxtaglomerular cells –
- extraglomerular mesangial cells or.....



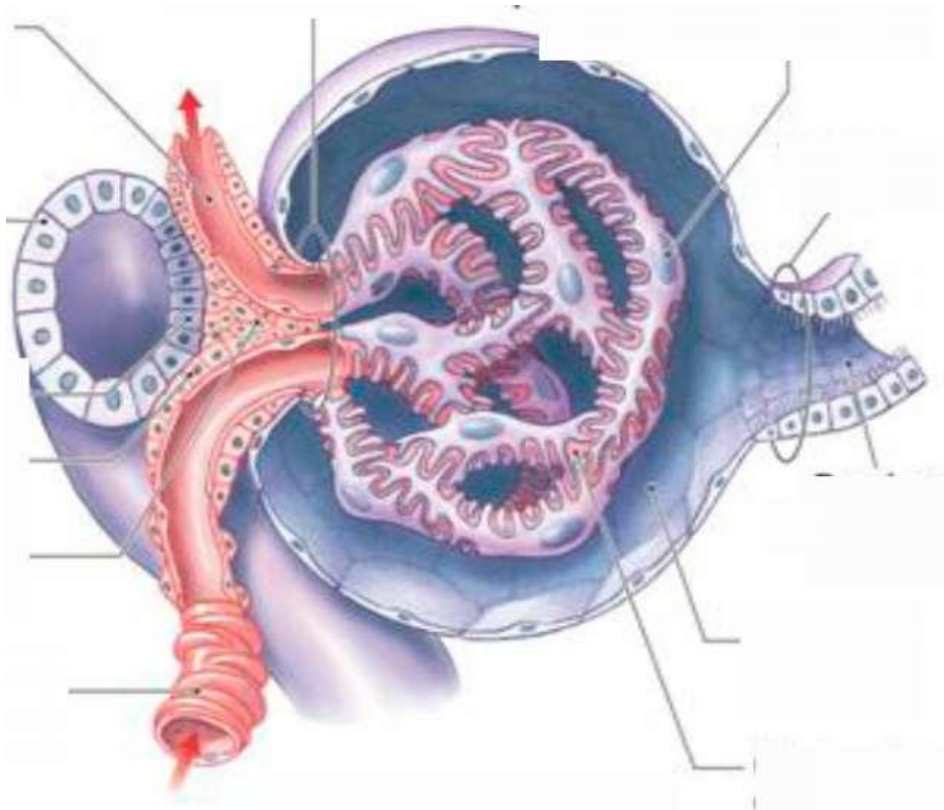
## Ureter / Bladder

- mucosa –
- muscularis –
- adventitia / serosa –

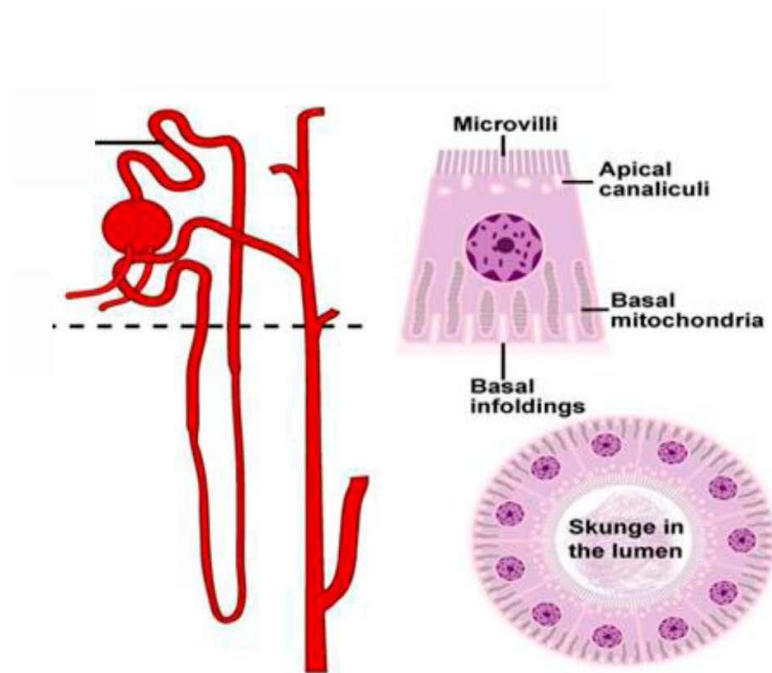
## Urethra

- 1.
- 2.
- 3.

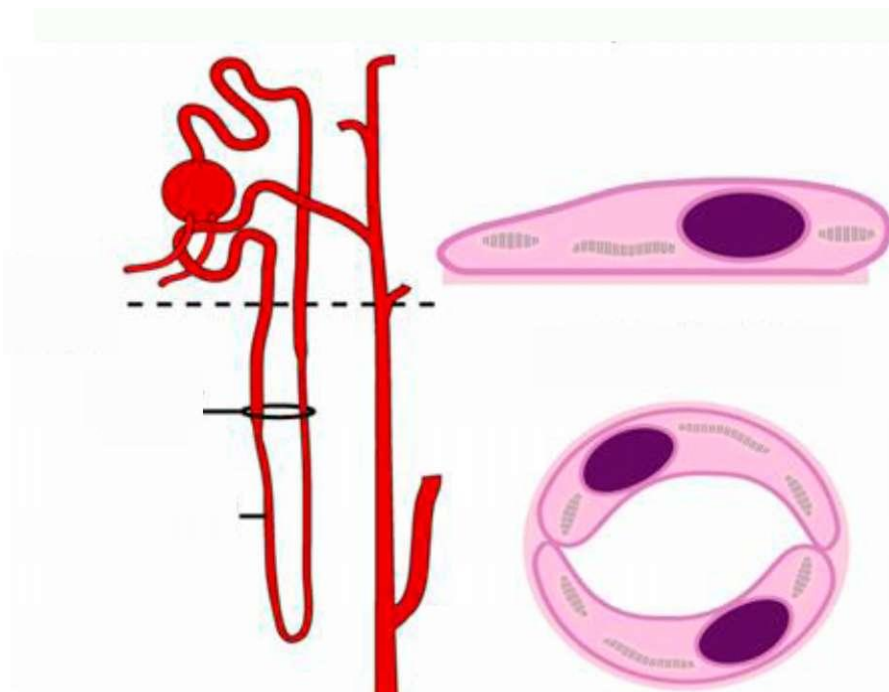
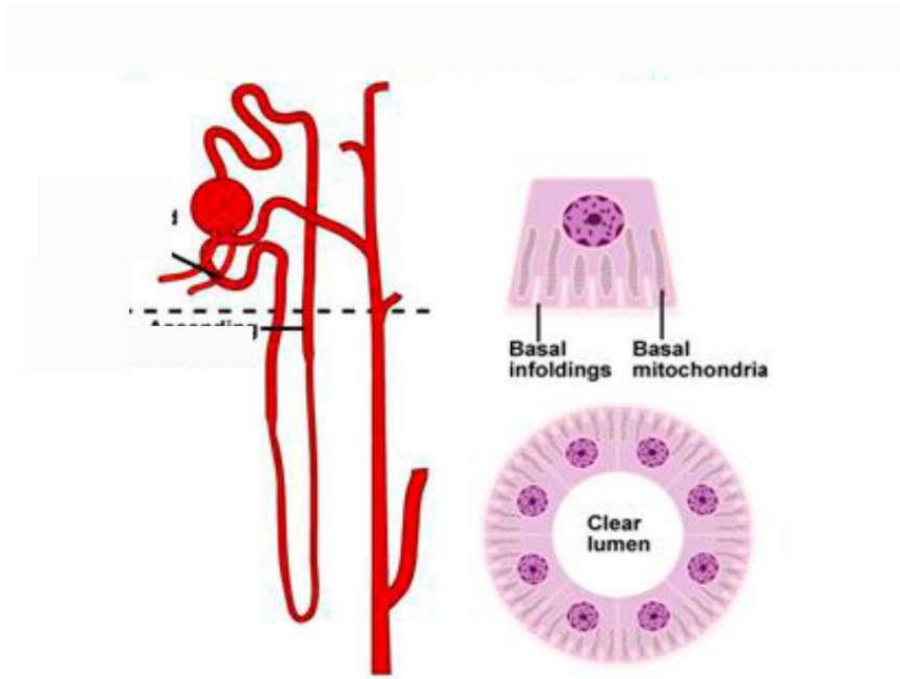
Designate



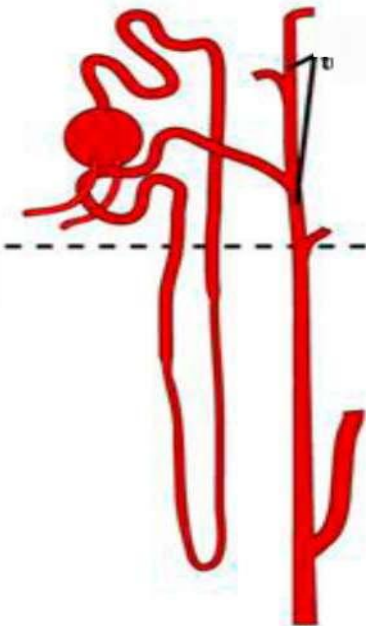
Designate



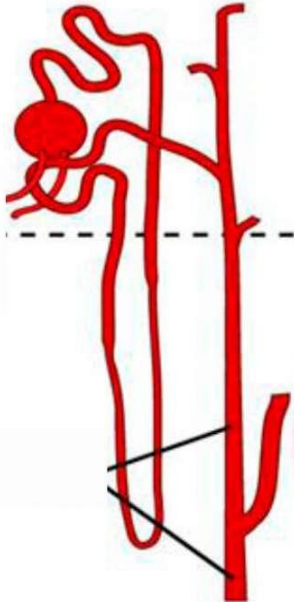
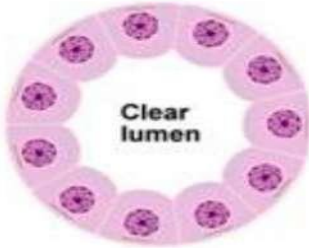
# Designate



Designate



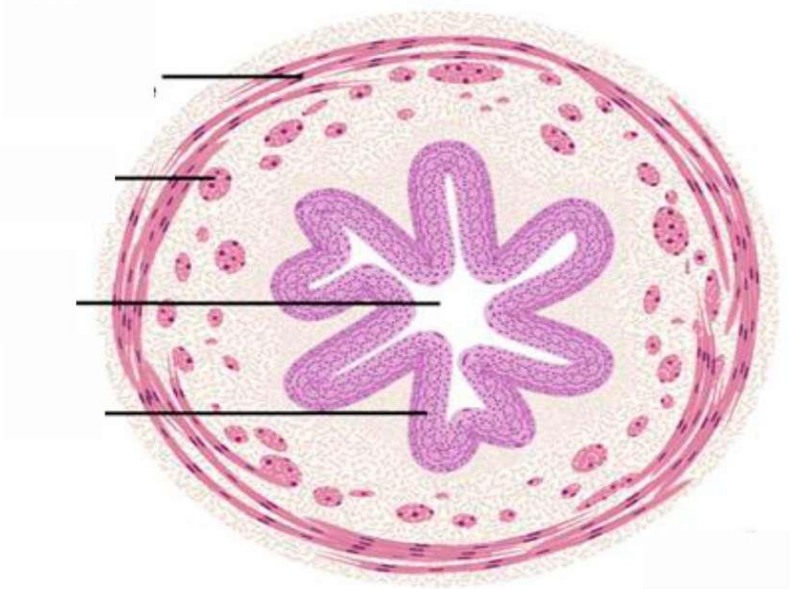
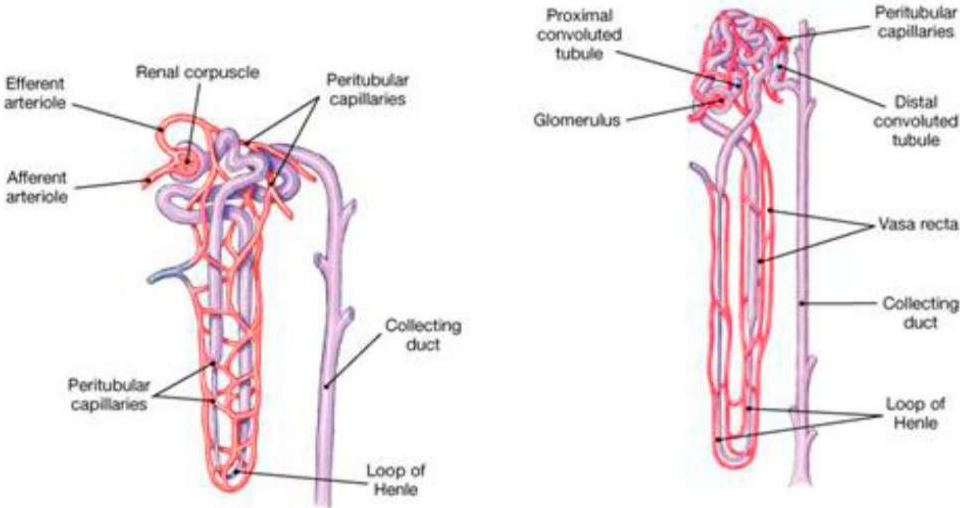
Cuboidal with a Domed surface



Columnar with domed surface



**Designate**



**Print , fill in text according to lecture and bring at the practical lesson**