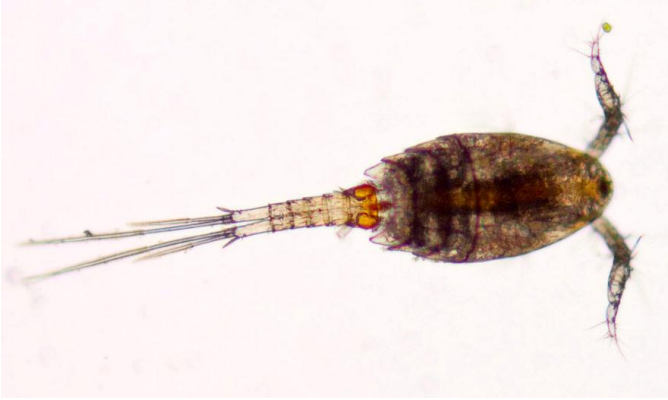




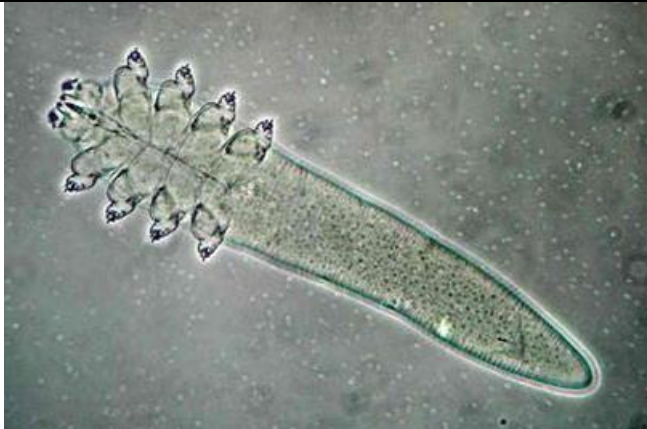
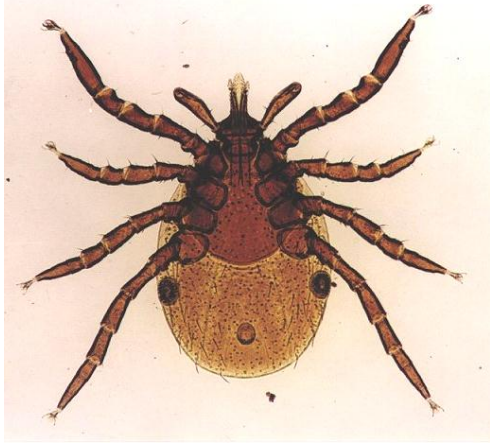


PHYLUM ARTHROPODA

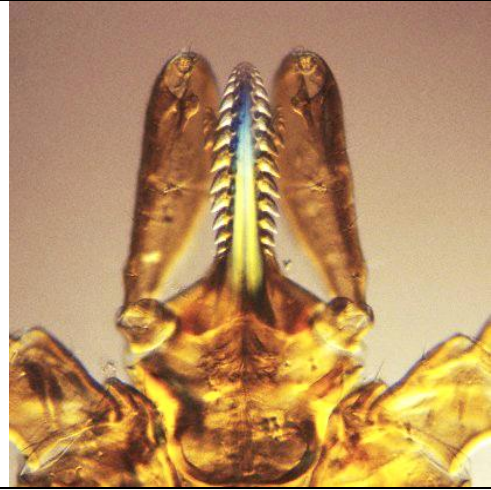
ARTHROPODA.

	
<p><i>Water flea Cyclops</i>, 0.562 mm , 0.562</p>	<p><i>Chelicerae and pedipalps of spider</i> (mouth parts of spider) () () -</p>
	
<p><i>Mediterranean black widow or steppe spider</i> (<i>Latrodectus spp.</i>) male 4-7 mm, female 10-20 mm long (<i>Latrodectus spp.</i>) , 4-7 , 10-20</p>	<p><i>Euscorpium tauricus</i>, Crimean scorpion, 35-40 mm <i>Euscorpium tauricus</i>, , 35-40</p>
	
<p><i>Sarcoptes scabiei</i>, human itch mite male 0.25-0.35 mm, female 0.3-0.45 mm long <i>Sarcoptes scabiei</i>, 0.25-0.35 , 0.3-0.45</p>	<p><i>Demodex folliculorum</i>, follicle mite or face mite 0.1 - 0.4 mm <i>Demodex folliculorum</i>, 0.1 - 0.4</p>



Ixodes ricinus, dog tick (adult)
male 2.4-2.8 mm, female 3.0-3.6 mm

Ixodes ricinus,
2.4-2.8 , 3.0-3.6



Mouth parts of Ixodes ricinus

Ixodes ricinus



Larva of Ixodes ricinus, 0.5-0.8 mm long

Ixodes ricinus, 0.5-0.8



Nymph of Ixodes ricinus, 1.361.5 mm

of Ixodes ricinus, 1.361.5



Pediculus capitis, head louse, female, 2,4-4 mm

Pediculus capitis, , , 2,4-4



Pediculus capitis, head louse, male, 2-3 mm

Pediculus capitis, , , 2-3



Pediculus vestimenti, body louse, male
2.1-3.75 mm

Pediculus vestimenti,
2,1-3,75



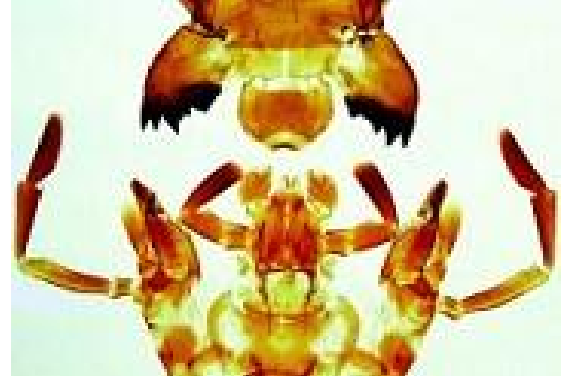
Phthirus pubis, pubic or crab louse,
male ó 1 mm long, female ó 1.5 mm

Phthirus pubis,
- 1 , - 1,5



Pulex irritans, human flea
male ó 2-2.5 mm, female - 2.5-3.5 mm long

Pulex irritans,
ó 2-2.5 , - 2.5-3.5



Mouth parts of cockroach



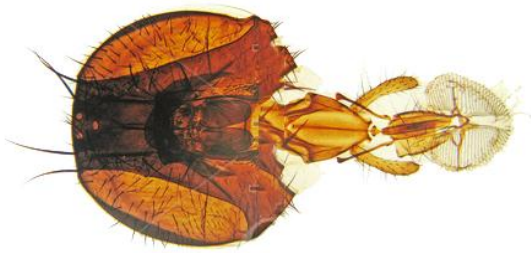
Cimex lectularius, bed bug
male - 4.9-6.4 mm, female - 4.8-8.4 mm long

Cimex lectularius,
4.9-6.4 , - 4.8-8.4

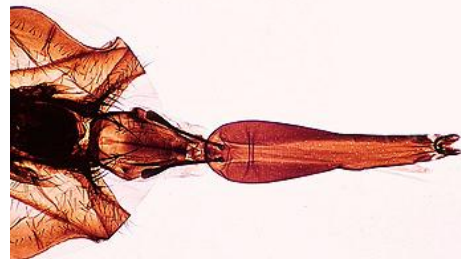


Triatoma infestans, kissing bug, ~ 2.5 cm long

Triatoma infestans,
, ~ 2,5



Head of Musca domestica house fly
Musca domestica,



Mouth parts of Stomoxys calcitrans stable fly
Stomoxys calcitrans,



Leg of Musca domestica house fly
Musca domestica,



Glossina spp., tsetse fly, 9-14 mm long
- Glossina spp., 9-14



Simulium black fly, 1-5 mm
Simulium, 1-5











Chrysops spp., deer fly, 6-12 mm
Chrysops, 6-12



Wohlfahrtia magnifica, spotted flesh fly, 6-10 mm
Wohlfahrtia magnifica, , 6-10



Phlebotomus papatasi, sand fly, 1.5-3 mm
Phlebotomus papatasi, , 1,5-3

	
<p><i>Egg of Culex pipiens mosquito</i> <i>Culex pipiens</i></p>	<p><i>Egg of Anopheles maculipennis mosquito</i> <i>Anopheles maculipennis</i></p>
	
<p><i>Larva of Culex pipiens mosquito</i> <i>Culex pipiens</i></p>	<p><i>Larva of Anopheles maculipennis mosquito</i> <i>Anopheles maculipennis</i></p>
	
<p><i>Pupa of Culex pipiens mosquito</i> <i>Culex pipiens</i></p>	<p><i>Pupa of Anopheles maculipennis mosquito</i> <i>Anopheles maculipennis</i></p>
	
<p><i>Head of female Culex pipiens mosquito</i> <i>Culex pipiens</i></p>	<p><i>Head of female mosquito Anopheles maculipennis</i> <i>Anopheles maculipennis</i></p>



Head of male *Culex pipiens* mosquito
Culex pipiens



Head of male *Anopheles maculipennis* mosquito
Anopheles maculipennis