

AZƏRBAYCAN RESPUBLİKASI SƏHIYYƏ NAZİRLİYİ

AZƏRBAYCAN
TİBB JURNALI



AZERBAIJAN MEDICAL JOURNAL
АЗЕРБАЙДЖАНСКИЙ МЕДИЦИНСКИЙ ЖУРНАЛ

Rüblük elmi-praktik jurnal 2024, № 1

1925-ci ildən nəşr edilir

REDAKSİYA HEYƏTİ

Rafiq Məmmədhasənov (*baş redaktor*)

Fuad İslamzadə (*baş redaktor müavini*)

Cəmil Əliyev, Elmar Qasimov,
Əhliman Əmiraslanov, İvan Dedov, Mehmet Haberal

EDITORIAL STAFF

Rafiq Mammadhasanov (*Editor-in-Chief*)

Fuad Islamzada (*Deputy Editor-in-Chief*)

Ahliman Amiraslanov, Elmar Gasimov,
Jamil Aliyev, Ivan Dedov, Mehmet Haberal

BAKI

REDAKSİYA ŞURASI

Adil Baxşəliyev (Bakı, Azərbaycan)
Cəbrayıl Məmmədov (Bakı, Azərbaycan)
David Virsaladze (Tbilisi, Gürcüstan)
Əlihüseyn Hidayətov (Bakı, Azərbaycan)
Əzizağa Talışinski (Bakı, Azərbaycan)
Fariz Babayev (Bakı, Azərbaycan)
Məmməd Nəsirov (Bakı, Azərbaycan)
Nadejda Demixova (Sumı, Ukrayna)
Niyazi Novruzov (Naxçıvan, Azərbaycan)
Paşa Musayev (Bakı, Azərbaycan)
Rauf Şahbazov (Sirakuz, ABŞ)
Rəna Şirəliyeva (Bakı, Azərbaycan)
Rizvan Abdullayev (Xarkov, Ukrayna)
Sabir Əliyev (Bakı, Azərbaycan)
Mansur Bünyatov (Bakı, Azərbaycan)
Vaqif Şadlinski (Bakı, Azərbaycan)
Valentin Fadeyev (Moskva, Rusiya)
Yaqub Qurbanov (Bakı, Azərbaycan)

EDITORIAL BOARD

Adil Bakhshaliyev (Baku, Azerbaijan)
Jabrail Mammadov (Baku, Azerbaijan)
David Virsaladze (Tbilisi, Georgia)
Alihuseyn Hidayatov (Baku, Azerbaijan)
Azizagha Talishinskiy (Baku, Azerbaijan)
Fariz Babayev (Baku, Azerbaijan)
Mammad Nasirov (Baku, Azerbaijan)
Nadiia Demikhova (Sumy, Ukraine)
Niyazi Novruzov (Nakhchivan, Azerbaijan)
Pasha Musayev (Baku, Azerbaijan)
Rauf Shahbazov (Syracuse, USA)
Rana Shiraliyeva (Baku, Azerbaijan)
Rizvan Abdullayev (Kharkiv, Ukraine)
Sabir Aliyev (Baku, Azerbaijan)
Mansur Bunyatov (Baku, Azerbaijan)
Vagif Shadlinski (Baku, Azerbaijan)
Valentin Fadeyev (Moscow, Russia)
Yagub Gurbanov (Baku, Azerbaijan)

Azərbaycan Respublikası
Mətbuat və İnformasiya Nazirliyində
qeydə alınmışdır. Şəhadətnamə №354

Redaksiyanın ünvanı: Azərbaycan,
Bakı-AZ1122, H.Zərdabi küç., 96

ISSN 0005-2523

Tel.: (+99450) 371-66-04

E-mail: tibbjurnali@gmail.com

www.azmedjournal.com

Azərbaycan Tibb Jurnalında
dərc olunan məqalələr haqqında
Elsevier EMBASE
(Excerpta Medica), SCOPUS və
eLIBRARY.RU
bibliografik dərgilərində
məlumat verilir

İÇİNDƏKİLƏR

KLİNİK TƏDQIQATLAR

- R.Ya.Abdullayev, A.S.Yefimenko, L.A.Sysun, A.V.Loqvinenko, N.F.Posoxov, R.R.Abdullayev, T.A.Dudnik, A.Q.Kiriçenko, N.V.Tomax**
İşemik insult olan xəstələrdə yuxu arteriyası aterosklerozunun sonografik xüsusiyyətləri
G.İ.Cəbraylova
Autoimmun tiroidit xəstəliyi olan uşaqlarda mikroelementlərlə immun sistem göstəriciləri və tiroid status arasında qarşılıqlı asılılıq
- G.M.Dadaşova**
Ürəyin işemik xəstəliyi ilə əlaqəli xronik ürək çatışmazlığı zamanı ürək ritmi pozulmalarının dinamikasının keçirilmiş miokard infarktı və cərrahi revaskulyarizasiya ilə qarşılıqlı əlaqəsi
K.Ə.Eyvazova
Qanaxma ilə ağırlaşmış qastroduodenal xoralarda mikrosirkulyasiya şəbəkəsinin yerli immun mühafizə mexanizmləri
- R.R.Əliyev**
Azərbaycanın şəhər və kənd yaşayış məntəqələrində dağınıq skleroz xəstəliyinin xüsusiyyətləri
V.V.Filonenko, A.A.Kanyura, V.A.Sokolovski
Dodaq və damağın anadangəlmə birtərəfli yarığı olan uşaqlarda diş-çənə anomaliyalarının və deformasiyalarının strukturu
- B.D.Haqverdiyev**
Yaşlı xəstələrdə qarının ön divarı yırtıqlarının cərrahi müalicəsindən alınan nəticələrin yaxşılaşdırılmasına dair
G.X.İbrahimova, S.İ.Əhmədova, S.B.Məmmədov, X.Ə.Əhmədov, G.V.İbrahimova
Uşaqlarda infeksiyon ekzantemalar: parvovirus infeksiyası
- C.P.İsayev, G.X.İbrahimova, S.İ.Əhmədova, V.N.Cavadzadə**
Yetkinlik yaşında olan şəxslərdə qızılcanın klinik xüsusiyyətləri
- M.U.İsmayılov, R.Ş.Poluxov, İ.V.Poddubny**
Anorektal malformasiyanın müalicə taktikasının seçilməsi
- T.A.Kovtun, V.P.Yefimenko, İ.L.Çexova**
Üst çənənin biomexaniki sisteminin gərginləşmə-deformasiya vəziyyəti və onun travma zamanı dişlərin immobilizasiyasına təsiri
- F.İ.Kulikova, R.Y.Abdullayev, A.G.Kiriçenko, T.V.Leşeva, T.L.Kuçyak, Yu.M.Xvorostenko, İ.N.Kixtenko, V.F.Zavizion, S.İ.Səfərova**
Reproduktiv yaşda olan qadınlarda endoçerviksin dövrü dəyişiklikləri
- T.V.Mehdiyev**
Metabolik sindrom fonunda piylənmənin orlistatla müalicəsinin effektivliyi
- R.S.Rzayev**
Somatik patologiyası olan kişilərdə erektil disfunksiyanın klinik əlamətləri
- Z.İ.Rzayev, İ.T.Axundov, Ş.F.İbrahimli, F.İ.İslamzadə**
Aşağı ətraflarında diabetik angiopatiya və diabetik pəncə sindromu olan xəstələrdə endolimfatik dərman terapiyasının funksional göstəricilərə təsiri

C O N T E N T S

CLINICAL RESEARCH

- 5 R.Ya.Abdullaiev, A.S.Yefimenko, L.A.Sysun, A.V.Logvinenko, N.F.Posokhov, R.R.Abdullaiev, T.A.Dudnik, A.Q.Kyrychenko, N.V.Tomakh**
Sonographic characteristics of carotid atherosclerosis in patients with ischemic stroke
- 13 G.I.Jabrailova**
Interdependence between microelements and immune system indicators and thyroid status in children with autoimmune thyroiditis
- 18 G.M.Dadashova**
Association of myocardial infarction and surgical revascularization with dynamics of cardiac rhythm disturbances in chronic heart failure due to ischemic heart disease
- 25 K.A.Eyvazova**
Local immunoprotective mechanisms of microcirculation in bleeding gastroduodenal ulcers
- 31 R.R.Aliyev**
Characteristics of multiple sclerosis in urban and rural areas of azerbaijan
- 39 V.V.Filonenko, A.A.Kaniura, V.A.Sokolovskiy**
Structuring of dentognathic anomalies and deformations in children with congenital unilateral cleft lip and palate
- 45 B.D.Hagverdiyev**
Improving the results of surgical treatment of hernias of the anterior abdominal wall in elderly patients
- 49 G.H.Ibrahimova, S.I.Ahmedova, S.B.Mamedov, H.A.Ahmedzade, G.V.Ibrahimova**
Infections exanthems in children: parvovirus infection
- 56 J.P.Isayev, G.Kh.Ibrahimova, S.I.Ahmadova, V.N.Javadzade**
Clinical characteristics of measles in adults
- 62 M.U.Ismailov, R.Sh.Polukhov, I.V.Poddubny**
Choice of treatment tactics for anorectal malformations
- 70 T.A.Kovtun, V.P.Iefymenko, I.L.Chekhova**
Stress-strain state biomechanical system of the maxilla and its influence on teeth immobilization in trauma
- 79 F.I.Kulikova, R.Ya.Abdullaiev, A.G.Kyrychenko, T.V.Leshcheva, T.L.Kutsiak, J.M.Khvorostenko, I.N.Kikhtenko, V.F.Zavizion, S.I.Safarova**
The cyclic changes in the endocervix in reproductive-age women
- 85 T.V.Mehdiyev**
Efficacy of treatment with orlistat in the treatment of obesity against the background of metabolic syndrome
- 91 R.S.Rzaev**
Clinical symptoms of erectile dysfunction in men with somatic pathology
- 96 Z.I.Rzayev, I.T.Akhundov, Sh.F.Ibrahimli, F.I.Islamzade**
The influence of endolymphatic drug therapy on the functional indexes in patients with lower extremities diabetic angiopathy and diabetic foot syndrome

DOI: 10.34921/amj.2024.1.012

REPRODUKTİV YAŞDA OLAN QADINLARDA ENDOÇERVİKSİN DÖVRİ DƏYİŞİKLİKLƏRİ

F.İ.Kulikova¹, R.Y.Abdullayev², A.G.Kiriçenko³, T.V.Leşeva¹, T.L.Kuçyak¹,
Yu.M.Xvorostenko⁴, İ.N.Kixtenko⁴, V.F.Zavizion⁴, S.İ.Səfərova⁵

¹Dnepr Tibb və İctimai Sağlamlıq İnstitutu, Dnepr, Ukrayna;

²Xarkov Milli Tibb Universiteti, Xarkov, Ukrayna;

³Ukrayna Səhiyyə Nazirliyinin Tibbi və Sosial Əlillik Problemləri üzrə
Ukrayna Dövlət Tədqiqat İnstitutu, Dnepr, Ukrayna;

⁴Dnepr Milli Tibb Universiteti, Dnepr, Ukrayna;

⁵Azərbaycan Tibb Universitetinin Onkoloji klinikası, Bakı, Azərbaycan

Xülasə. Məqalədə reproduktiv yaşda olan 78 qadının endoserviksində baş verən dövrü dəyişikliklərin transvaginal sonografik müayinəsinin nəticələri təqdim edilmişdir. Qadınların yaşı 19-dan 35-ə qədər olmuşdur.

Müayinə edilən qadınlardan 4 nəfərin (59,0±5,6%) anamnezində hamiləlik qeydə alınmış (I qrup), 32 nəfərdə (41,0±5,6%) hamiləlik olmamışdır (II qrup).

Gecikmiş proliterativ dövrdə I qrupdakı qadınlarda endoserviks qalınlığı 6,3±0,7 mm, II qrupdakı qadınlarda isə 9,1±1,2 mm olmuşdur ($p<0,05$). Menstruasiya dövrünün 9-10-cu günündə I qrupdakı qadınlardan 29 nəfərdə (63,0±7,1) endoserviks exogenliyi azalmışdır, II qrupda isə belə nəticə qadınlardan 23 nəfərdə (71,9±7,9%) müşahidə edilmişdir. Menstruasiyanın 13-14-cü günündə nisbətən çox hallarda endoserviks exogenliyinin orta dərəcəli artımı müşahidə edilmişdir – I qrupda 36 qadında (78,3±6,1%), ikinci qrupda 18 qadında (56,3±8,8%) ($p<0,05$). İzoxogen endoserviks isə menstruasiya dövrünün 21-23-cü günlərində nisbətən çox müşahidə edilmişdir – I qrupda 26 (56,5±7,3%), ikinci qrupda 25 (78,1±7,3) qadında ($p<0,05$).

Açar sözlər: reproduktiv yaş, endoçerviks dövrü dəyişiklikləri, ultrasonografiya

Ключевые слова: репродуктивный возраст, циклические изменения эндочервикса, ультразвуковая диагностика

Key words: reproductive age, cyclic changes of endocervix, ultrasonography

THE CYCLIC CHANGES IN THE ENDOCERVIX IN REPRODUCTIVE-AGE WOMEN

F.I.Kulikova¹, R.Ya.Abdullaiev², A.G.Kyrychenko³, T.V.Leshcheva¹,
T.L.Kutsiak¹, J.M.Khvorostenko⁴, I.N.Kikhtenko⁴, V.F.Zavizion⁴, S.I.Safarova⁵

¹Dnipro Institute of Medicine and Public Health, Dnipro, Ukraine;

²Kharkiv National Medical University, Kharkiv, Ukraine;

³Ukrainian State Research Institute of Medical and Social Disability Problems of the
Ministry of Health of Ukraine;

⁴Dnipro State Medical University, Dnipro, Ukraine;

⁵Oncology Clinic of Azerbaijan Medical University, Baku, Azerbaijan

Summary. The article presents data on transvaginal sonographic assessment of cyclic changes in the endocervix in 78 women of reproductive age (19-35 years) without uterine pathologies. Among the examined women, 46 (59.0±5.6%) had a history of pregnancy (group I), 32 (41.0±5.6%) did not experience pregnancy (group II).

The thickness of the endocervix in the late proliferative period in women of group I averaged 6.3 ± 0.7 mm, and in group II – 9.1 ± 1.2 mm, indicating a significant ($p < 0.05$) difference between them. A decrease in the echogenicity of the endocervix on days 9-10 of the menstrual cycle was noted in 29 ($63.0 \pm 7.1\%$) women in group I, and in 23 ($71.9 \pm 7.9\%$) in group II. A moderate increase in the echogenicity of the endocervix was most often recorded on days 13-14 of the cycle - in 36 ($78.3 \pm 6.1\%$) and 18 ($56.3 \pm 8.8\%$) women ($P < 0.05$), respectively. Isoechogenic endocervix was most often observed on days 21-23 of the cycle - in 26 ($56.5 \pm 7.3\%$) and 25 ($78.1 \pm 7.3\%$) women ($P < 0.05$), respectively.

As established in the literature, the main methods for examining the vaginal part of the cervix are colposcopy and cytological examination. Colposcopy allows you to identify suspicious neoplastic changes, conduct a targeted biopsy followed by morphological examination, which helps improve the accuracy of diagnosing cervical diseases [1, 2]. The endocervical canal connects the vagina and the uterine cavity. Along the circumference of the cervix, the fornix is a protrusion of the distal part of the vaginal mucosa. The external os of the cervix gives rise to the endocervical canal and ends with the internal os of the cervix. Cervicospscopy does not allow visualization of the endocervix and diagnosis of its pathologies. Cytological examination of the cervical canal does not always give a clear picture of the condition of the endocervix [3].

In women of reproductive age, cervical pathologies vary widely and include both benign lesions (eg, cervicitis, hyperplasia, nabothian cysts, cervical polyps, leiomyomas, endometriosis and congenital anomalies) and malignant lesions, particularly cervical carcinoma [4]. In addition, lesions arising in the uterine body may involve secondary cervical involvement, such as endometrial carcinoma and endometrial prolapse. Many of these conditions can be identified and characterized using ultrasound, which is considered the first imaging modality of the female pelvis. However, examination of the cervix during a pelvic ultrasound is often superficial, so cervical disease may be missed or misdiagnosed. Transabdominal cervical ultrasound may not provide sufficient spatial resolution to diag-

nose cervical disease in many patients, so endovaginal ultrasound is considered the optimal method [5-7].

Unlike the body of the uterus and ovaries, ultrasonography of the cervix is used to a limited extent, in particular, to accurately determine the length of the cervix and the condition of the internal os in pregnant women [8-11].

While ultrasonography is widely used to assess cyclic changes in the endometrium in women with infertility, the structure of the endocervix at different periods of the menstrual cycle is not sufficiently covered in the literature.

The purpose of the study is to evaluate cyclic changes in the endocervix in women of reproductive age, taking into account a history of pregnancy.

Material and methods. The study included 78 women of reproductive age (19–35 years). Among them, 46 ($59.0 \pm 5.6\%$) had a history of pregnancy (group I), and 32 ($41.0 \pm 5.6\%$) did not experience pregnancy (group II). 27 ($34.6 \pm 5.4\%$) women of group I were under the age of 25 years, 19 ($24.4 \pm 4.8\%$) were aged 26-35 years. 14 ($18.0 \pm 4.4\%$) women of group II were under the age of 25 years, 18 ($23.0 \pm 4.8\%$) were aged 26-35 years, respectively (Table 1).

Echography was carried out using an endovaginal sensor in the frequency range of 4-9 MHz on a Philips HD-11 ultrasound device.

The reliability of differences in average values was assessed using a two-sample independent t-test for average values in groups with a non-parametric distribution (Mann-Whitney method) after determining the nature of the distribution. Differences were considered significant at $p < 0.05$.

Table 1. Distribution of examined women by age

Age	Group I	Group II	Total
19-25	27 ($34,6 \pm 5,4\%$)	14 ($18,0 \pm 4,4\%$)	41 ($52,6 \pm 5,7\%$)
26-35	19 ($24,4 \pm 4,8\%$)	18 ($23,0 \pm 4,8\%$)	37 ($47,4 \pm 5,7\%$)
Total	46 ($59,0 \pm 5,6\%$)	32 ($41,0 \pm 5,6\%$)	78 (100%)

Results and discussion. Visualization of the cervix during transvaginal echography was carried out in the sagittal and axial planes. At the level of the middle third of the cervix, the total thickness of the endocervix was measured on days 5-6, 9-10, 13-14 and 21-23 of the menstrual cycle. In addition, during the same period, the echostructure of the endocervix was assessed (tabl. 2).

As can be seen from the table, during all periods of the menstrual cycle in the group of women (group II) in whom pregnancy did not occur, the thickness of the endocervix was greater than in fertile women (group I). On the 5-6th and 21-23rd days of the menstrual cycle, the difference between the indicators of these groups was negligible. A significant difference between them was revealed on the 9-10th and 13-14th days of the cycle. The thickness of the endocervix on days 9-10 of the cycle in fertile women was 5.4 ± 0.6 mm, in women with infertility - 7.9 ± 0.8 mm ($P < 0.05$). On the 13th-14th days of the menstrual cycle, the thickness of the endocervix was 6.3 ± 0.7 mm and 9.1 ± 0.9 mm ($P < 0.05$), respectively (Fig. 1, 2).

Further analysis of the functional state of the ovaries and endometrium among women

who did not have a pregnancy in 13 ($40.6 \pm 8.7\%$) cases revealed various types of disorders - luteinization of the neovulatory follicle, luteal phase insufficiency, lack of a ripening follicle.

In all groups on the 8th-10th and 12th-14th days of the cycle, the cervical canal widened, the largest of which was among women who had a history of childbirth. In this regard, the total thickness of the mucosa in the transverse section was determined without taking into account the width of the cervical canal. Therefore, the true total thickness of the leaves was, on average, 3-5 mm less than the anteroposterior size of the endocervix along with the cervical canal, defined as the distance between the side walls on its transverse section (Fig. 3).

In addition to quantitative parameters, we determined such qualitative parameters of endocervix as echogenicity, clarity of contours for the corresponding days of the cycle. Echogenicity of endocervix is assessed as reduced, isoechoic, moderate increased. The frequency of occurrence of these ultrasound symptoms among all groups of women is calculated for the corresponding days of the cycle.

Table 2. Ultrasonographic parameters of endocervix in different periods of the menstrual cycle

Echographic parameters of endocervix	Menstrual cycle days	I group n=46	II group n=32
The total thickness of the endocervix (Te), mm	5-6- th	$4,9 \pm 0,5$	$5,3 \pm 0,6$
	9-10-th	$5,4 \pm 0,6$	$7,9 \pm 0,8$
	13-14-th	$6,3 \pm 0,7$	$9,1 \pm 1,2$ $P < 0,05$
	21-23-th	$4,8 \pm 0,5$	$5,7 \pm 0,6$
Hypoechoic endocervix, n%	5-6- th	15 ($32,6 \pm 6,9\%$)	13 ($40,6 \pm 8,7\%$)
	9-10-th	29 ($63,0 \pm 7,1\%$)	23 ($71,9 \pm 7,9\%$)
	13-14-th	4 ($8,7 \pm 4,1\%$)	1 ($3,1 \pm 3,1\%$)
	21-23-th	8 ($17,4 \pm 5,6\%$)	2 ($6,3 \pm 4,3\%$)
Izo-echoic endocervix, n%	5-6- th	21 ($45,7 \pm 7,3\%$)	18 ($56,3 \pm 8,8\%$)
	9-10-th	11 ($23,9 \pm 6,3\%$) $P < 0,05$	2 ($6,3 \pm 4,3\%$)
	13-14-th	8 ($17,4 \pm 5,6\%$)	5 ($15,6 \pm 6,4\%$)
	21-23-th	26 ($56,5 \pm 7,3\%$)	25 ($78,1 \pm 7,3\%$) $P < 0,05$
Moderate echogenicity of endocervix, n%	5-6- th	10 ($21,7 \pm 6,1\%$) $P < 0,05$	2 ($6,3 \pm 4,3\%$)
	9-10-th	7 ($15,2 \pm 5,3\%$)	6 ($18,8 \pm 6,9\%$)
	13-14-th	36 ($78,3 \pm 6,1\%$) $P < 0,05$	18 ($56,3 \pm 8,8\%$)
	21-23-th	9 ($19,6 \pm 5,9\%$)	4 ($12,5 \pm 5,8\%$)

As can be seen from Table 2, the best visualization of the endocervix was carried out on the 9-10th and 13-14th days of the menstrual cycle. At the same time, on the 9-10th day, a decrease in echogenicity was recorded significantly more often, and on the 13-14th day of the cycle, a moderately increased echogenicity was recorded. Among fertile women, the frequency of decreased echogenicity of the endocervix on days 9-10

of the cycle was $63.0 \pm 7.1\%$, in women without a history of pregnancy - $71.9 \pm 7.9\%$. The same indicators on days 5-6 of the cycle were $32.6 \pm 6.9\%$ and $40.6 \pm 8.7\%$, respectively. Was found a significant difference ($p < 0.001$) in the frequency of occurrence of reduced echogenicity of the endocervix in both groups between the 9-10th and 13-14th days of the menstrual cycle (Fig. 4).



Fig. 1. Echogram of a 21-year-old woman with impossibility of pregnancy. On the 13th day of the menstrual cycle, the thickness of the endocervix is 1.03 cm.



Fig. 2. Echogram of a 26-year-old woman with impossibility of pregnancy. On the 14th day of the menstrual cycle, the thickness of the endocervix is 1.09 cm.

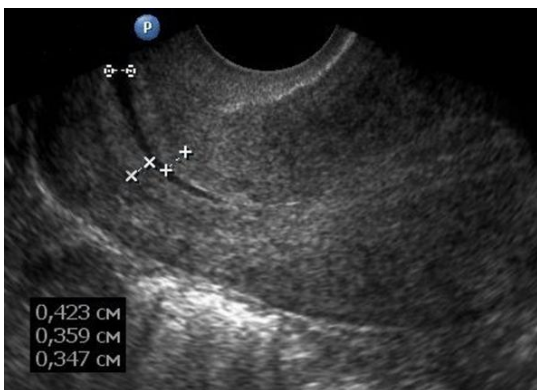


Fig. 3. Longitudinal view of the body and cervix on the 14th day of the menstrual cycle. The thickness of the leaves is 0,359 cm and 0,347 mm, the maximum width of the cervical canal is 0,423 mm.

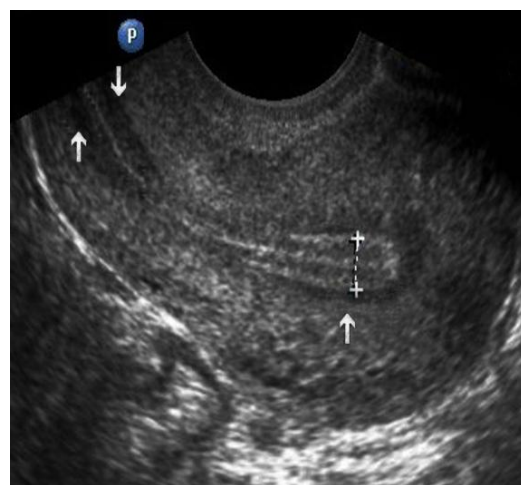


Fig. 4. Longitudinal view of the body and cervix on the 9th day of the menstrual cycle. A homogeneous hypoechoic endocervix is visualized (left arrows).

For days 21-23 of the cycle, the isoechoic structure of the endocervix is most characteristic; in fertile women it was recorded in $56.5 \pm 7.3\%$, and in women with infertility in $78. \pm 7.3\%$ of cases ($p < 0,05$), respectively (Fig. 5).



Fig. 5. Longitudinal view of the body and cervix on the 23rd day of the menstrual cycle. Isoechoic endocervix is determined (arrows).

Discussion

Transvaginal echography is the leading imaging method for assessing the structure of the endometrium in women with infertility, inflammatory diseases of the cervix, and in the early stages of endometriosis due to its informativeness and low cost [12-15].

The study by Shahzad, H. et al. (2022) showed that among women of reproductive age, the frequency of infertility caused by hormonal imbalance in the age group of 20-25 years is significantly higher than 40-45 years and in approximately 68% of them it is primary [16]. In our studies, among women

with an increase in the thickness of the endocervix in 40.6%, various manifestations of hormonal imbalance were identified, in particular luteinization of a non-ovulating follicle, insufficiency of the luteal phase of the menstrual cycle and polycystic ovaries.

Cyclical changes in endocervix in healthy women have been studied in a few works. In works devoted to chronic cervicitis development of hypertrophy of cervix is shown, without taking into account the state of endocervix [17-19].

Determination of the thickness and echogenicity of the endocervix at different periods of the menstrual cycle made it possible to identify a group of women of reproductive age with hormonal imbalance. We recorded the greatest thickness of the endocervix on the 13-14th days of the menstrual cycle among women who did not become pregnant.

Conclusions:

1. In women of reproductive age, the greatest thickness of the endocervix is observed in the late proliferative phase, precisely on the 13-14th days of the menstrual cycle. This figure among women with hormonal imbalance is significantly higher than among fertile women.

2. Hypoechoic endocervix is most often observed on days 9-10, isoechoic - on days 21-23 of the menstrual cycle.

Information about the conflict of interest.

The authors declare no conflict of interest related to the publication of this article.

REFERENCES

1. Burness J.V., Schroeder J.M., Warren J.B. Cervical Colposcopy: Indications and Risk Assessment // *Am Fam Physician*. 2020 Jul 01;102(1):39-48.
2. Hariprasad R., Mittal S., Basu P. Role of colposcopy in the management of women with abnormal cytology. *Cytojournal*. 2022;19:40.
3. Dawood M.T., Naik M., Bharwani N., Sudderuddin S.A., Rockall A.G., Stewart V.R. Adnexal Torsion: Review of Radiologic Appearances // *Radiographics*. 2021 Mar-Apr;41(2):609-624.
4. Cunningham R.K., Horrow M.M., Smith R.J., Springer J. Adenomyosis: A Sonographic Diagnosis // *Radiographics*. 2018 Sep-Oct;38(5):1576-1589.
5. Wildenberg J.C., Benjamin L. Yam., Jill E Langer J.L., Lisa P.J. US of the Nongravid Cervix with Multimodality Imaging Correlation: Normal Appearance, Pathologic Conditions, and Diagnostic Pitfalls // *Radiographics*. 2016. Mar-Apr; 36(2):596-617. doi: 10.1148/rg.2016150155;
6. Bardin R., Perl N., Mashiach R., Ram E. et al. Prediction of Adnexal Torsion by Ultrasound in Women with Acute Abdominal Pain // *Ultraschall Med*. 2020 Dec;41(6):688-694.;
7. AIUM Practice Parameter for the Performance of an Ultrasound Examination of the Female Pelvis // *J Ultrasound Med*. 2020 May;39(5):E17-E23].

8. Sharma SK, Nagpal M, Thukral C. Evaluation of pre induction scoring by clinical examination vs transvaginal sonography. *International Journal of Reproduction, Contraception, Obstetrics and Gynecology*. 2017; 6(1):229.
9. Panchampreet K., Manpreet K., Manjula R., Mini M. Role of transvaginal sonography in preinduction cervical assessment. Is it helpful? // *International Journal of Contemporary Medical Research*. 2017; 4 (7):1549–54.
10. Said M., Khalil O., Mansy A., Farag M. Sonographic cervical canal length and/or a bishop score assessment as a predictor for successful induction of labor // *The Egyptian Journal of Fertility of Sterility*. 2018; 22(2):38–43.
11. Alanwar A., Hussein S.H., Allam H.A., Hussein A.M., Abdelazim I.A., Abbas A.M. et al. Transvaginal sonographic measurement of cervical length versus Bishop score in labor induction at term for prediction of caesarean delivery // *The Journal of Maternal-Fetal & Neonatal Medicine*. 2019:1–8. <https://doi.org/10.1080/14737175.2019.1644444>.
12. Abdullaiev R.Ya., Ragimzade S.E., Kulikova F.I., Lysenko T.P. et al. Ultrasound diagnosis of non-neoplastic disease of the cervix // *Azerbaijan medical journal ATJ*, 2019, №3, 41-50.
13. Mohammed A., Maysa S.E. and Keriakos N. Ultrasound Role in Management of Female Infertility // *The Medical Journal of Cairo University*. 2020; 88(September): 1523-30.
14. Turner K.A., Rambhatla A., Schon S. et al. Male Infertility is a Women's Health Issue-Research and Clinical Evaluation of Male Infertility Is Needed. *Cells*. 2020;9(4):990. doi: 10.3390/cells9040990.;
15. Куликова Ф.И., Абдуллаев Р.Я., Карпенко В.Г., Абрамов С.В., Пасиешвили Н.М. и др. Роль ультразвукографии в диагностике гормонального бесплодия: недостаточность лютеиновой фазы. *Azerbaijan medical journal (ATJ)*, 2021, №3, 63-69.
16. Shahzad H., John A., Ali A., Ashraf A., & Ahmad Naeem M. Incidence of infertility in females and Evaluation of its Causes Using Ultrasonography // *Pakistan BioMedical Journal*, 2022; 5 (4). <https://doi.org/10.54393/pbmj.v5i4.342>.
17. Yonglan H. Cyclic changes of the female reproductive system in young and middle-aged women during the menstrual cycle: an initial 3T MRI study based on T2 3D-space sequence. *ECR* (2014).
18. Polk J. Chronic cervicitis: presenting features and responses to therapy // *American Journal of Obstetrics and Gynecology* 213.6 (2015): 907.
19. Abdullaiev R.Ya., Pavlov S.B., Kulikova F.I., Sibihankulov A.H., Medvediev M. V., Larionova I., Aleksenko O. Ultrasound diagnosis of cervical changes in different localization of cervicitis in women with ectopia of the vaginal part of the cervix // *Georgian Medical News*. 01 May 2019; (290):32-37.

ЦИКЛИЧЕСКИЕ ИЗМЕНЕНИЯ В ЭНДОЦЕРВИКСЕ У ЖЕНЩИН РЕПРОДУКТИВНОГО ВОЗРАСТА

**Ф.И.Куликова¹, Р.Я.Абдуллаев², А.Г.Кириченко³, Т.В.¹Лещева, Т.Л.Куцяк¹,
Ю.М.Хворостенко⁴, И.Н.Кихтенко⁴, В.Ф.Завизион⁴, С.И.Сафарова⁵**

¹ Днепропетровский институт медицины и общественного здоровья, Днепр, Украина;

² Харьковский национальный медицинский университет, Харьков, Украина;

³ Украинский государственный научно-исследовательский институт медико-социальных проблем инвалидности Министерства здравоохранения Украины;

⁴ Днепропетровский государственный медицинский университет, Днепр, Украина;

⁵ Онкологическая клиника Азербайджанского медицинского университета, Баку, Азербайджан

Резюме. В статье представлены данные о трансвагинальной сонографической оценке циклических изменений в эндоцервиксе у 78 женщин репродуктивного возраста (19-35 лет) без патологий матки. Среди обследованных женщин у 46 (59,0±5,6%) в анамнезе были беременности (I группа), у 32 (41,0±5,6%) – беременность не наступала (II группа).

Толщина эндоцервикса в позднем пролиферативном периоде у женщин I группы в среднем составила 6,3±0,7 мм, а во II группе – 9,1±1,2 мм, что показывает на достоверное (p<0,05) различие между ними. Снижение эхогенности эндоцервикса на 9-10-е дни менструального цикла отмечено у 29 (63,0±7,1%) женщин I группы, у 23 (71,9±7,9%) – II группы. Умеренное повышение эхогенности эндоцервикса наиболее часто регистрировалась на 13-14-й дни цикла – у 36 (78,3±6,1%) и у 18 (56,3±8,8%) женщин (P<0,05), соответственно. Изоэхогенный эндоцервикс наиболее часто отмечался на 21-23-й дни цикла – у 26 (56,5±7,3%) и у 25 (78,1±7,3%) женщин (P<0,05), соответственно.

Autor for correspondence:

Abdullaiev Rizvan Yaqub, Kharkiv National Medical University, Kharkiv, Ukraine

E-mail: rizvanabdullaiev@gmail.com