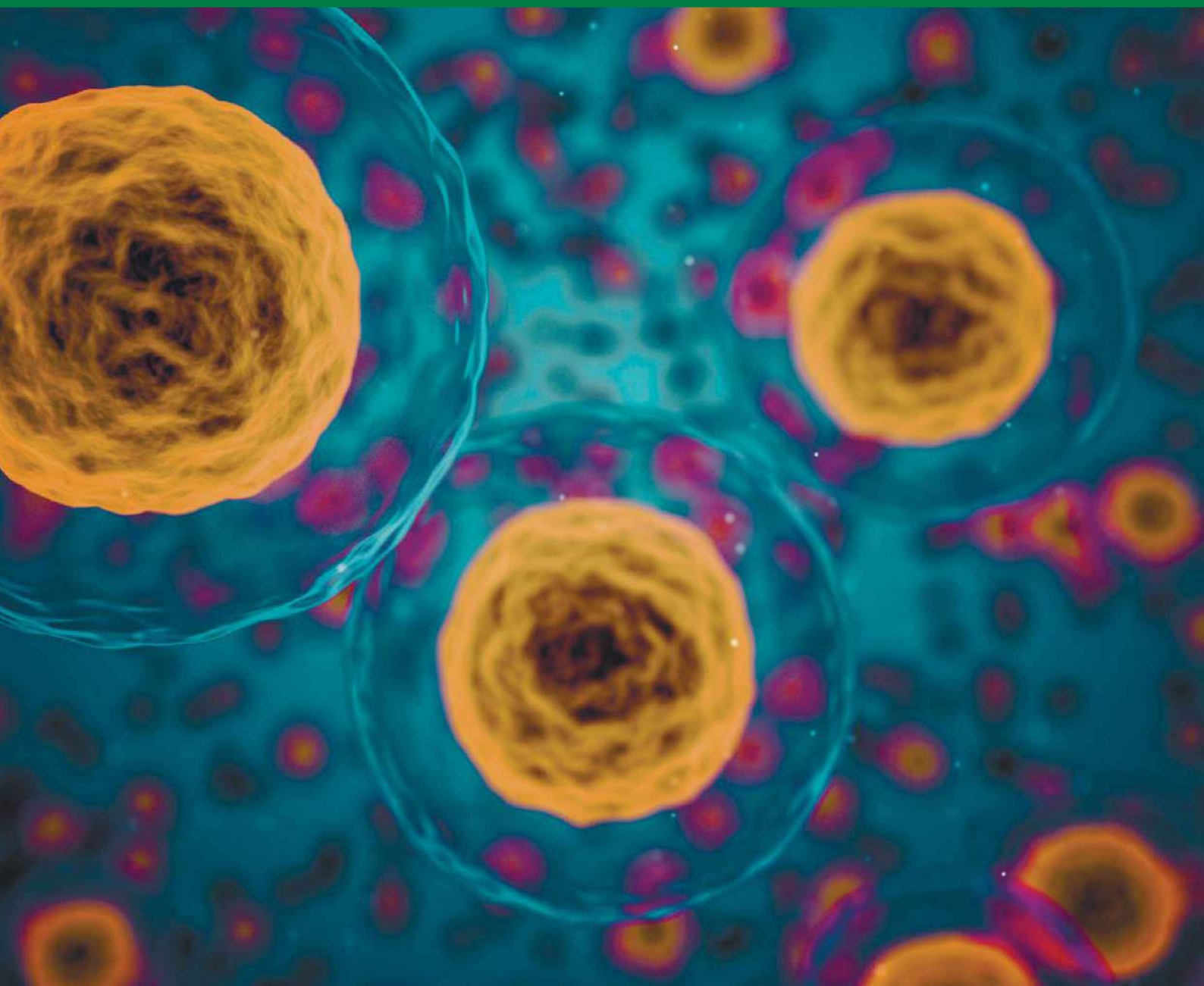


Kharkiv National Medical University

# INTERNATIONAL SCIENTIFIC INTERDISCIPLINARY CONFERENCE ISIC - 2021





DENTISTRY .....	36
Ahmad Mrashaha, Salim Zahraoui.....	37
THE DENTAL STATUS OF FOREIGNERS FROM COUNTRIES WITH THE DIFFERENT LEVEL OF PRIMARY PREVENTION.....	37
Andrienko K.Yu.....	38
THE EXPEDIENCY OF USING TENSION AND DEFORMATION THEORIES TO ASSESS THE QUALITY OF COMPLETE REMOVABLE DENTURES .....	38
Anton Khudyk, Sergey Grigorov .....	40
Zygomatic Arch Fractures Treatment .....	40
Bugaiev Vladyslav .....	41
ASSESSMENT OF LIFE QUALITY OF PATIENTS WITH DENTITION DEFECTS IN PRE- AND POST-PROSTHETIC PERIODS .....	41
Haneen Hassan Badawi, Nada Omar.....	42
ABILITY OF CINNAMON TO MASK THE BAD BREATH DUE TO SPICY FOOD CONSUMPTION .....	42
Marchenko Mariia.....	44
THERAPEUTIC EFFICACY OF LOCAL TREATMENT PATIENTS WITH I-II DEGREES OF SEVERITY OF CHRONIC GENERALIZED PERIODONTITIS .....	44
Markovska Iryna .....	46
ASSESSMENT OF THE QUALITY OF DRINKING WATER CONSUMPTION BY PERSONS WORKING UNDER THE INFLUENCE OF ELECTROMAGNETIC .....	46
Mohamad Fares.....	47
Subjective aspect in aesthetic dentistry. The problems of the doctor and the patient .....	47
Rudenko Anna.....	48
INVESTIGATION OF THE VISUAL METHOD FOR DETERMINING THE COLOR OF ARTIFICIAL AND NATURAL TEETH BY STUDENTS OF THE DENTAL FACULTY.....	48
Veliev Renat, Osipov Taras, Kucherenko Volodimir.....	50
CRANIOMETRIC INDICATORS OF STUDENTS OF THE DENTAL FACULTY OF KhNMU.....	50
Zaverukha Yaroslava.....	51
CREATION OF A TOOTH MODEL WITH NONCARIOUS CERVICAL LESIONS FOR ANALYSIS BY THE FINITE ELEMENT ANALYSIS.....	51
INFECTIOUS DISEASES .....	54
Akansha Singh, Vaibhav, Hovardovska Olga.....	55
Impact of Covid-19 on Tuberculosis incidence.....	55
Anmol Gupta.....	56
Clinical effects of COVID-19 in pregnancy.....	56
Chorna Daria .....	57
CHILD TUBERCULOSIS MORTALITY IN UKRAINE DURING 2015-2019.....	57
Daniel Okhaigbe, Olga Hovardovska.....	58
ISONIAZID-RESISTANT AND RIFAMPICIN-RESISTANT TUBERCULOSIS: DYNAMICS IN KHARKIV REGION OF UKRAINE .....	58
Ishan Verma , Olga Pogorelova .....	60
COVID-19 INFLUENCE ON TUBERCULOSIS NOTIFICATION IN INDIA AND UKRAINE. ....	60
Kopytsia Mykhailo .....	61
HOW WELL DO FACE MASKS PROTECT AGAINST CORONAVIRUS (SARS-COV-2)? .....	61
Malakhova Dariya.....	62
ASYMPTOMATIC COURSE AND COVID-19 CARRIER .....	62
Osobu Daniel.....	64
ANTIPHOSPHOLIPID SYNDROME- A COAGULATORY DISORDER .....	64
Pohorielova Olha.....	66
MATHEMATICAL MODEL FOR PREDICTING BIOCHEMICAL PARAMETERS IN PATIENTS WITH PULMONARY TUBERCULOSIS ON THE BASIS OF DETERMINING THE LEVEL OF HUMAN-BETA-DEFENSIN-1 .....	66
Sliepenchenko Marharyta, Medvid Nataliia.....	67
CONTENT OF INTERLEUKINS IN THE BLOOD OF CHILDREN WITH ROTAVIRUS INFECTION AGAINST THE ACTIVATION OF HERPESVIRUS INFECTION .....	67



However, even high-quality work made to order does not always meet the tastes of the customer and does not necessarily please others. This situation can lead to a conflict with its subsequent resolution in the legal field. Graduates must understand their potential insecurity in the face of an upset client. Correctly completed medical documentation, taking into account the peculiarities of the country in which the professional activity will be cited, acts as a defense. Timely and complete informing of patient about various ways of solving his problem, documented consent to manipulations, as well as a high demand for the constant growth of doctor's own qualifications are the key to preventing conflicts.

*Rudenko Anna*

**INVESTIGATION OF THE VISUAL METHOD FOR  
DETERMINING THE COLOR OF ARTIFICIAL AND NATURAL  
TEETH BY STUDENTS OF THE DENTAL FACULTY**

Department of Prosthetic Dentistry  
Kharkiv National Medical University  
Kharkiv, Ukraine  
Scientific advisor: PhD. German Stanislav

Relevance. Determination and reproduction of the natural tooth shade is considered one of the weakest links in aesthetic dentistry. Although shade determination is a daily routine for many dentists, color reproduction using this process leads to inconsistent results and frequent mistakes. Today, there are many alternative instrumental shade detection methods such as EasyShade, The ShadePilot, CrystalEye, e\*Lab protocol. But due to the high cost of instrumental technologies, the most popular and traditional method for matching a shade in dentistry is the use of visual determination using a ready-made scale.

It should also be borne in mind that the color of natural teeth from artificial combinations of shades, the presence of pigment spots, mamelons and other persons, in order to be individual for each clinical case, and it is not always possible to create this using only one shade. The training program for students of dental faculties in Ukraine not includes trainings for determining the color of teeth, therefore, beginners often have difficulties in this process.



Materials and methods. The study of the skill of visual teeth color matching using standard scales VITA classical (Vita, Germany), 3D-Master among 50 students of the dental faculty of Kharkiv national medical university by artificial set of teeth (Spofa Dental, shade A2) and natural teeth of patients. The study was carried out in two stages, the first: without theoretical preparation of students, the second: after instruction and training.

Results. The study shows the number of students' mistakes during the process of color tooth matching on standard monochrome tooth set (A2 color) without theoretical preparation using the Vita classic scale was found 84%, according to the Vita 3dMaster scale was 88% of mistakes.

The results of students' determination of the color of the patient's teeth without theoretical preparation by Vita Classic scale was 96% errors, and by the Vita 3D master scale was 94% errors. After theoretical instructing and practical training on the use of scales, we received the following data: Determination of the color of a standard set tooth by vita scale was 24% of mistakes, and Vita 3d Master was found 12% of mistakes. Also was determined the data of color teeth matching on the patients. Were found for the Vita scale - 36% mistakes, for the 3D Master – 18 % of mistakes.

Conclusion. Research has shown a high rate of student mistakes without instructions and training of teeth color matching, that was found from 84 to 96% mistakes. It was easier for untrained specialists to determine the correct color according to the Vita classic scale; among the trained specialists, the Vita 3D Master scale showed better results. After the instruction, the number of mistakes in the process of teeth color matching decreased significantly, which is more than two times more accurate compared to the data without preparation. So, the skill of determination the color of teeth can be trained.