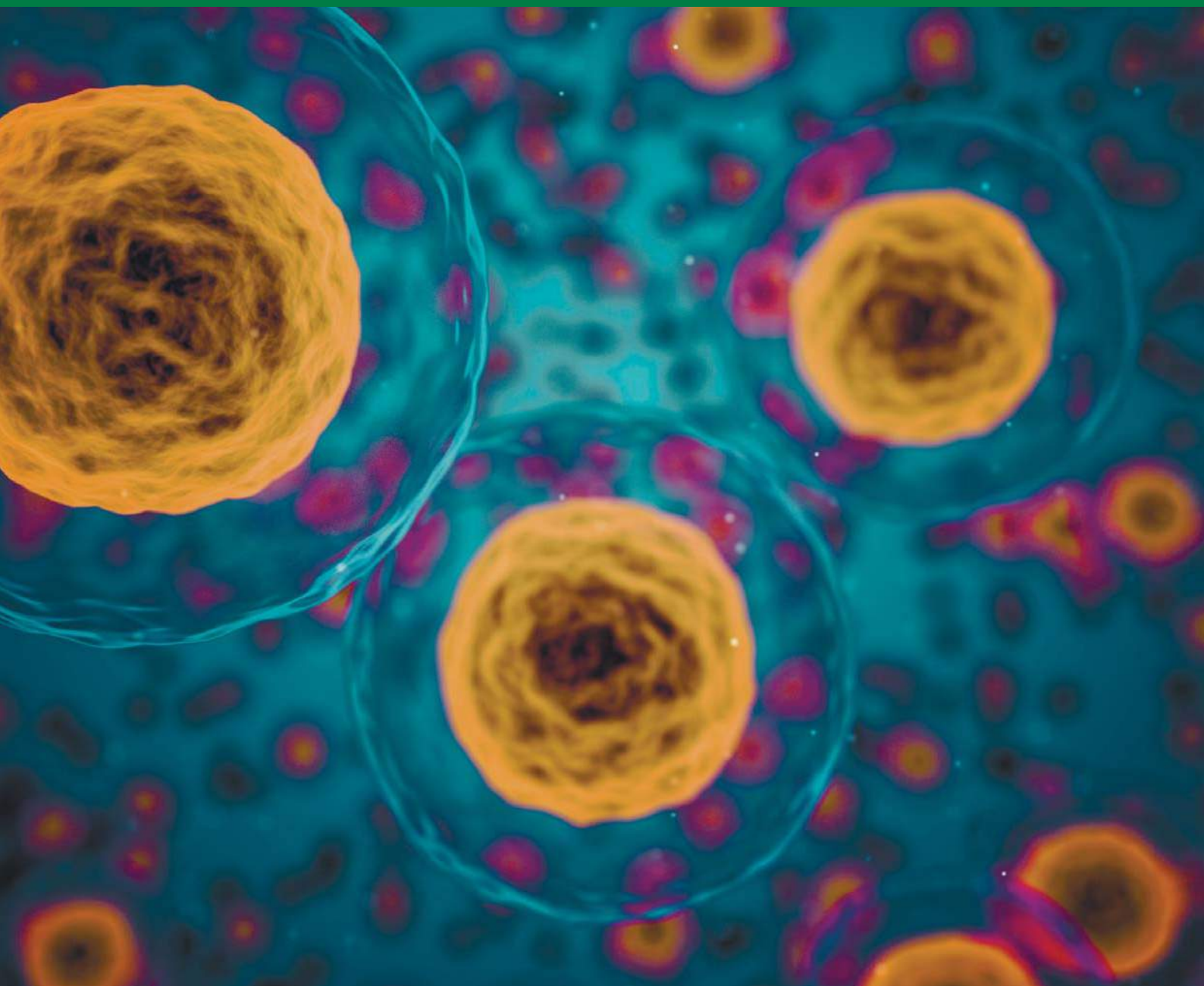


Kharkiv National Medical University

# INTERNATIONAL SCIENTIFIC INTERDISCIPLINARY CONFERENCE ISIC - 2021



**KHARKIV NATIONAL  
MEDICAL UNIVERSITY**



**PREVENTIVE MEDICINE**





carried out considering the degree of risk of burnout according to R. Kalimo et al. (2003). At the second stage by the method of logistic regression processing of answers of respondents from the group of prepathology and the selected coefficients:  $X = -0,561 + 0,154 \cdot A1 - 0,282 \cdot A2 - 0,403 \cdot A3 - 0,158 \cdot A4 + 0,075 \cdot A5 - 0,401 \cdot A6 + 0,475 \cdot A7 + 0,057 \cdot A8 + 0,159 \cdot A9 + 0,252 \cdot A10 + 0,486 \cdot A11 + 0,376 \cdot A12 + 0,516 \cdot A13 - 0,411 \cdot A14 - 0,441 \cdot A15 - 0,359 \cdot A16$ , where A1-A16 is an MBI-GS statement. At the third stage, the coefficients of the logistic regression model were sorted - the maximum values of the coefficients corresponded to the most informative statements. The fourth stage involved assessing the quality of the model by the metrics Accuracy, Precision, Recall and f1-score. The fifth step was to build a Confusion Matrix and classify the data. The sixth stage was to visualize the data. As a result, a model was built that allows the presence of information statements of the questionnaire MBI-GS to suggest the presence of burnout.

Conclusions. Thus, the definition of criteria for prepathology of occupational burnout according to the MBI-GS questionnaire will prevent the development of this phenomenon in workers of socially significant professions.

*Muhammad Zulfikar, Polyvianna Yulia, Semerenskaya Tetyana*

## **COVID19, A BIOLOGICAL WARFARE**

Department of Epidemiology

Kharkiv National Medical University

Kharkiv, Ukraine

Scientific advisor: prof. Chumachenko Tetyana

Introduction. Biological weapon is a weapon where the damaging agents are microorganisms such as viruses, bacteria, fungi, or other toxins that are produced and released intentionally to cause disease and death in humans, animals, or plants.

According to WHO, Wuhan, Hubei province was the first place where the first cases of COVID-19 was on the 31st of December 2019. It was reported about an unknown virus that can hit people and animals. The virus has spread to all continents and, in March 2020, WHO announced a pandemic of this disease, which was named COVID-19. At the end of 2020, new variants of this virus appeared, such as British, South African, and Indian. Globally, 4 May 2021, there have been 153 187 889 confirmed





cases of COVID-19, including 3 209 109 deaths, reported to WHO. The origin of this virus, which claims the lives of millions of people around the world, is still unknown. Therefore, some scientists speculate that the virus was used as an artificial biological weapon in the laboratory.

The Aim of the research. The purpose of this study is to examine research by some scientists who claim that the coronavirus is a biological weapon.

Material and Method. We used WHO data, data from articles in scientific medical journals (data base Pub Med), which cite facts indicating that a new disease for all of humanity, coronavirus, was created as a biological weapon.

Result. As soon as the first cases of coronavirus appeared in China, and then in other countries, WHO began to look for the source of the origin of this disease, in order to understand the implementation of anti-epidemic measures around the world. It was hypothesized that the source of the new virus is an animal. A year later, from January 14 to February 10, 2021, WHO officials organized a trip to Wuhan to investigate the animals that could be the source of the coronavirus. After the commission's trip to Wuhan, the source of coronavirus was not found. WHO Director-General Dr Tedros Adhanom Gebris addressed the audience and said that it will take time to identify the source of this virus. Anyway, some scientists have put forward a hypothesis about the artificial origin of this virus.

Robert Skopek in his scientific article "Coronavirus is a weapon of biological warfare" and Jing-Bao Ne in his work "In the shadow of biological warfare: conspiracy theories about the origin of COVID-19 and strengthening global biosafety governance as an urgent task" describe their hypothesis and presented some facts indicating that the coronavirus is a biological weapon. The underlying assumptions are said to be that the corona virus is a depopulation pattern, biological warfare, and economic warfare between America and China.

Robert Skopek mentions Francis Boyle, who is the developer of the biological weapons law and who claims that the new 2019 virus is a biological weapon and WHO knows about it. Robert Skopek echoes the words of Dr. Francis Boyle in his book Biological weapon's act, where he states that, "Dr. Boyle discusses the coronavirus outbreak in Wuhan, China and the Biosafety Level 4 Laboratory (BSL-4) from which he believes



the infectious disease escaped. He believes the virus is potentially lethal and an offensive biological warfare weapon or dual-use biowarfare weapons agent genetically modified with gain of function properties, which is why the Chinese government originally tried to cover it up and is now taking drastic measures to contain it”.

With America and China being in an economy tag of war other sources are allegedly stating that this is an economy war between the two nemesis. According to the University of Otago author Jing Bao Nie from his article that was published in 2020, “Two theories on the origins of COVID-19 have been widely circulating in China and the West respectively, one blaming the United States and the other a highest-level biocontainment laboratory in Wuhan, the initial epicenter of the pandemic.

Corona virus has had a huge impact and not in anyhow a positive way: The pandemic rapidly changed people’s way of living in a gruesome manner that to many until today it is still a shock. It snatched away loved ones, it took away jobs and the handling procedure that includes social distancing and lock down has led to the rise of so many abusive cases and a rise in panic, distress, tension anxiety, depression, and suicidal cases.

A Corona virus has brought forth the rising of losses that have led to misplacement of children, malnutrition, and an increase in poverty in so many countries. This has made so many people to come up with various assumptions so as to justify the tragedies and to find a person to hold accountable.

Conclusion. COVID-19 is a new disease that has reached pandemic levels. Scientists around the world are trying to find the source of this dangerous virus. Unknown source, rapid spread, high level of contagiousness, the ability to infect humans and animals, lack of treatment and vaccine, high mortality rate, ease of spread - all this may indicate that the coronavirus is a biological weapon.

However, its sources are still not clear, and whether its origin is artificial (laboratory) or natural, it is still not known. Some studies, as well as some facts, indicate that the coronavirus is a biological weapon. However, some scientists argue that a mutation of the receptor-binding domain occurred, due to which the SARS-CoV-2 spike protein acquired the ability to attach to human cells, which proves the natural origin of the virus. It is necessary study both theories and continue to study the possible sources of



this virus, as well as the virus itself, its properties, in order to prevent new mutations. Also, these studies are necessary for the correct treatment of this disease and the implementation of preventive and anti-epidemic measures.

*Pomazanov Dmytro, Borshchova Zlata*

## **THE IMPACT OF THE COVID-19 PANDEMIC ON THE LEVEL OF BURNOUT AMONG HEALTHCARE PROFESSIONALS**

Department of Public Health and Healthcare Management

Kharkiv National Medical University

Kharkiv, Ukraine

Scientific advisor: Ognev Victor

**Actuality.** Due to the COVID-19 pandemic, the problem of emotional stress and burnout among doctors is very relevant today. It is the medical industry workers who take on the brunt of the situation and are "in the first line of fire". Burnout syndrome (COMECON) is a condition that occurs due to chronic stress at work, which a person is not able to cope with and is characterized by certain indicators. These indicators include: a feeling of loss of energy and exhaustion, psychological distance from work, a sense of cynicism about work, as well as a decrease in professional activity.

**Aim.** Find out how the COVID-19 pandemic has affected health workers in almost 2 years and what emotional state it has led them to.

**Materials and methods.** In the course of our work, we have processed and analyzed foreign and domestic literary sources related to this topic.

**Results.** During this considerable period of time since the beginning of the pandemic, a sufficient number of scientific studies have been conducted, which allowed us to obtain certain data.

Among all employees surveyed, 93% experience stress, 86% say they feel anxious, 77% report frustration, 76% experience exhaustion and burnout, and 75% report feeling overworked.

Emotional exhaustion has been the most common complaint about the well-being of health workers over the past year and a half. This condition was followed by sleep problems (70%), physical exhaustion (68%), changes in eating behavior (57%), and



Muhammad Zulfikar, Polyvianna Yulia, Semerenskaya Tetyana .....	212
COVID19, A BIOLOGICAL WARFARE.....	212
Pomazanov Dmytro, Borshchova Zlata.....	215
The impact of the COVID-19 pandemic on the level of burnout among healthcare professionals.....	215
Rasuli Nelab .....	217
METHODS OF PSYCHOPROPHYLAXIS OF PSYCHOEMOTIONAL DISORDERS IN STUDENTS DURING PREPARATION FOR KROK-1 IN QUARANTINE .....	217
Ryasnianski Timur.....	218
HEALTHY LIFESTYLE AS AN INTEGRAL COMPONENT OF STUDY .....	218
Sarkis-Ivanova Vladislava, Suraj Singh .....	220
CHANGES IN LIFESTYLE OF MEDICAL STUDENTS IN CONDITIONS OF RIGOROUS QUARANTINE RESTRICTION .....	220
Sarkis-Ivanova Vladislava.....	221
PECULIARITIES OF THE LIFESTYLE OF MEDICAL UNIVERSITY STUDENTS IN THE CONDITIONS OF EPIDEMIC RESTRICTIONS. ....	221
Sharma Anshika .....	223
Drinking Water Disinfection .....	223
Shenher Anastasiia .....	225
THE ROLE OF PROFESSIONAL AND PSYCHOLOGICAL DETERMINANTS IN THE FORMATION OF EMOTIONAL BURNOUT IN EMERGENCY WORKERS .....	225
Simranpreet Singh, Vaibhav Sharma .....	226
COVID-19 AND INDIA: THE BATTLE OF 1.3B VS VIRUS .....	226
Sushchenko Elina .....	229
THE ROLE OF INDIVIDUAL CHARACTERISTICS IN THE DEVELOPMENT OF PROFESSIONAL BURNOUT IN THE BANKING SECTOR .....	229
Taranska Hanna.....	230
ANATOMICAL AND FUNCTIONAL FEATURES AND RISKS OF LUMBAR HYPERLORDOSIS IN PERSONS WITH OVERWEIGHT AND HYPODYNAMIA.....	230
Vasilchenko Maria, Starkova Violetta .....	232
LEARNING ENGLISH FROM TOP STUDENTS' PERSPECTIVE .....	232
SURGERY AND TRAUMATOLOGY .....	234
Bondareva Yelyzaveta.....	235
Modern methods of bile duct strictures diagnostics .....	235
Hlushko Svitlana, Sloz Diana.....	236
THE IMPORTANCE OF OBJECTIVE SYMPTOMS OF ACUTE INTESTINAL OBSTRUCTION ...	236
Hlushko Svitlana, Sloz Diana, Dzyza Alla.....	237
DISTINCTIVE FEATURES OF ANOSMIA IN ACUTE RESPIRATORY VIRAL AND CORONAVIRAL INFECTION .....	237
Lutska Svitlana.....	239
THE DYNAMIC OF KINETIC PARAMETERS DEPENDING ON THE TREATMENT IN POLYTRAUMA PATIENTS WITH CONCOMITANT CARDIAC PATHOLOGY. ....	239
Lutska Svitlana.....	240
DYNAMIC PARAMETERS DEPENDING ON THE TREATMENT IN POLYTRAUMA PATIENTS WITH CONCOMITANT CARDIAC PATHOLOGY.....	240
Penya Katrin, Nahorna Anastasia.....	242
STUDYING THE QUALITY OF LIFE OF POSTGASTRIC RESECTION PATIENTS .....	242
Shushliapina Nataliia, Cherniakova Olexandra.....	243
CAPILLAROSCOPY AS A METHOD FOR VERIFYING THE PATHOLOGY OF THE NASAL MUCOSA IN CHRONIC RHINRITIS .....	243
Yuliia Nekrasova, Olexandr Ievtushenko, Yelizavieta Smalko .....	245
IATROGENIC BILE DUCT INJURY DURING CHOLECYSTECTOMY: CHARACTERISTICS, CONSEQUENCES, SURGICAL TREATMENT. ....	245



