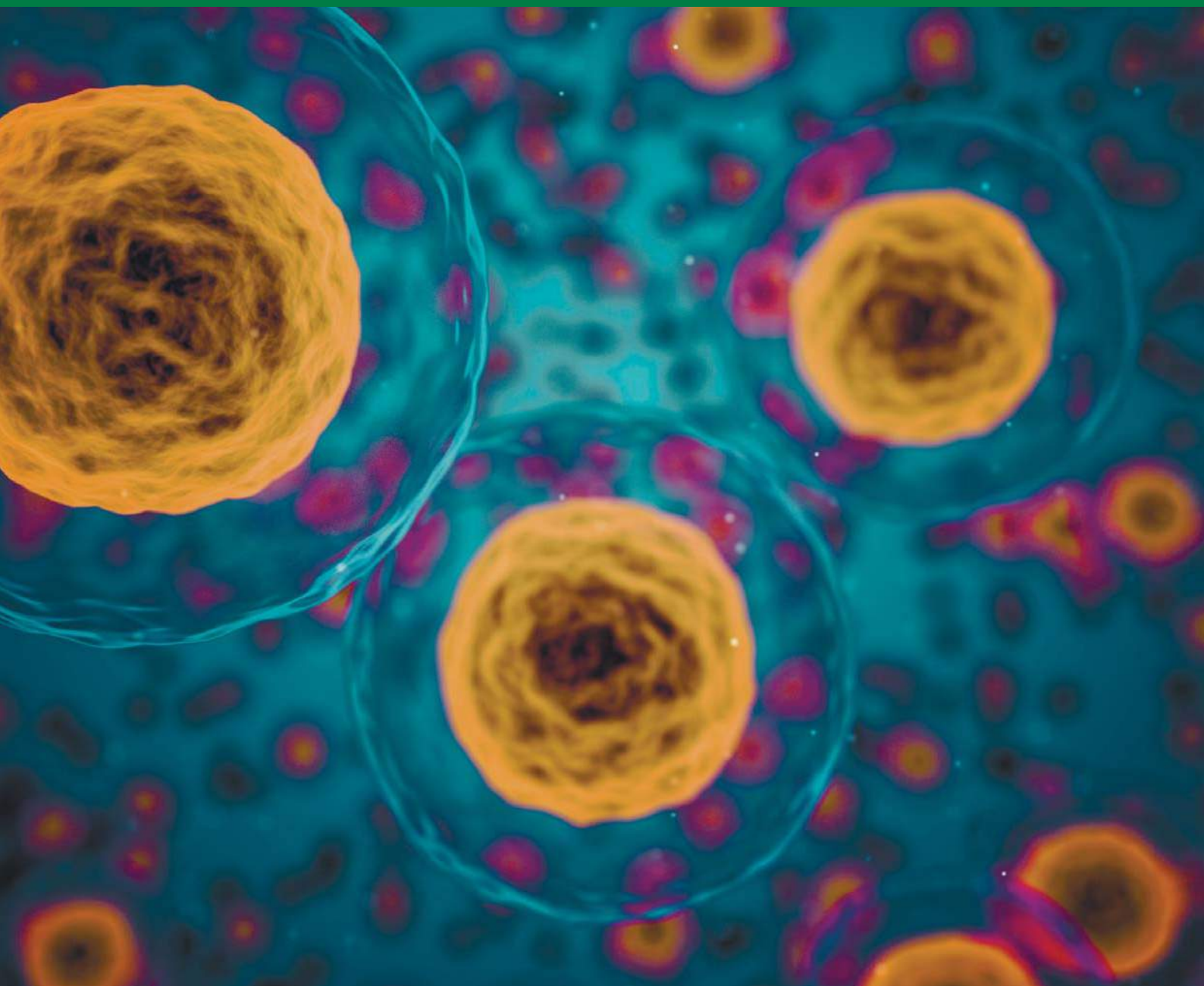
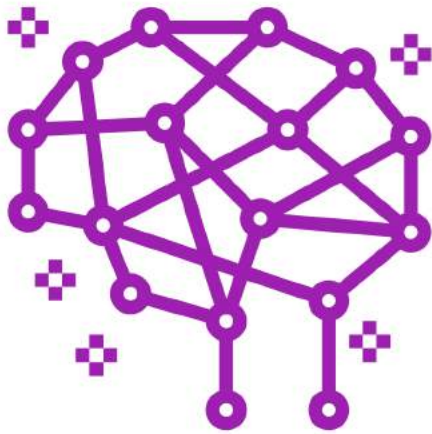


Kharkiv National Medical University

INTERNATIONAL SCIENTIFIC INTERDISCIPLINARY CONFERENCE ISIC - 2021



**KHARKIV NATIONAL
MEDICAL UNIVERSITY**



ISiC

NEUROSCIENCES





Methods: We included 28 patients (10 females, 65 ± 6 years old, and 18 males, 63 ± 7 years old) who suffered an acute ischemic stroke. The severity and qualitative characteristics of the post-stroke cognitive impairment were evaluated using the Montreal Cognitive Assessment (MoCA).

Results: Among all patients, the average MoCA score was 23 points, which corresponds to the mild cognitive impairment (MCI). Speech-language impairments predominated in 39% of patients, memory disorders - in 26%, visuospatial / executive disorders - in 14%, abstraction disorders - in 4%, attention disturbances - in 3%, calculation disturbances - in 2%, and in 12% of patients the nature of the impairment was uniform, without the predominance of any specific cognitive domain.

Conclusions: Despite the small number of patients included in the study, there is a certain data on the distribution of different qualitative variants of cognitive impairment among the patient with acute ischemic stroke. This information can be used to improve therapeutic options, rehabilitation strategies and more advanced clinical approach to the patients. However, this issue requires more comprehensive and large-scale study in the future.

Svitlana Nevzorova

CONSTITUTIONAL FEATURES OF PATIENTS WITH THYROTOXICOSIS

Department of Psychiatry, Narcology, Medical Psychology and Social Work
Kharkiv National Medical University
Kharkiv, Ukraine

Scientific advisor: prof. Mozgova Tetyana

Topicality. Anxiety in patients with thyrotoxicosis plays an important role. The analysis of trait anxiety may help to determine whether anxiety in thyrotoxicosis is a stable characteristic of a person. After all, an increased level of personal anxiety is as a rule associated with neurotic conflict and psychosomatic illnesses.

Purpose. Determining the constitutional features of patients with thyrotoxicosis.

Materials and methods. There was conducted a comprehensive examination of 112 patients with thyrotoxicosis of both sexes aged 25-55 years. The control group consisted of 32 people with normal thyroid function.



The study was based on the State-Trait Anxiety Inventory for Adults (STAI), a psychodiagnostic method for self-assessment of anxiety level.

Results. The level of trait anxiety (T-Anxiety) in patients of the main group was 46.86 ± 0.69 points (corresponding to a high level), and in patients in the control group 44.16 ± 2.17 points (corresponding to a moderate level).

High levels of trait anxiety were registered in $67.9 \pm 2.05\%$ of patients with thyrotoxicosis, moderate - in $32.1 \pm 1.41\%$, patients with low levels of personal anxiety were not detected. Indicators of the level of personal anxiety in the control group corresponded to a moderate level in $46.9 \pm 2.25\%$ of cases, high - in $37.5 \pm 2.01\%$, low - in $15.6 \pm 1.3\%$.

The analysis of personal anxiety was dominated by such symptoms as taking everything close to the heart, melancholy, and trying to avoid critical situations. Most patients were distracted and worried about every little thing, they were overwhelmed with anxiety when thinking about their affairs and worries.

Conclusions. Higher levels of personal anxiety proved to be more common among the patients with thyrotoxicosis, whereas patients in the control group showed moderate levels of personal anxiety, thus, this can be regarded as a certain readiness of a human body for an affective response within the pathophysiological process.

Uchechi Blessing Azuwike

SOME ASPECTS OF THE ATTITUDE OF MEDICAL STUDENTS TO MENTAL PATHOLOGY

Department of Psychiatry, Narcology, Medical Psychology and Social Work
Kharkiv National Medical University
Kharkiv, Ukraine

Scientific advisor: associate professor Korovina Liliia

Introduction. Although it is known that investment in mental health care brings in four times the return for every dollar, according to experts, mental health accounts for less than 1% of allocated funds (according to WHO).

According to some estimates, a fourth of the population, personally or indirectly (close relatives, friends) has to deal with mental pathology and mental health services. It is also known that 800,000 people commit suicide every year (WHO, 2018).



Podurets Anastasiia	102
THE IMPORTANCE OF SPIROMETRY IN THE MODERN WORLD	102
Rohan Jose.....	103
Peripheral Arterial Occlusion Disease.....	103
Shubham Malhotra, Tanu Suman	105
THE EFFECTIVENESS OF ADEMETIONINE ON THE STAGES OF LIVER FIBROSIS AND THE PENTRAXIN-3 LEVELS IN PATIENTS WITH NON-ALCOHOLIC FATTY LIVER DISEASE AGAINST THE BACKGROUND OF ARTERIAL HYPERTENSION.....	105
Soha Raad, Wael Hassan Daajeh	106
ALZHEIMER'S DISEASE AND DIABETES: A GROWING LINK	106
Sypalo Anna	107
SORTILIN AS A PREDICTOR OF THE DEVELOPMENT OF LIPID DISORDERS IN PATIENTS WITH COMORBIDITY OF PATHOLOGIES	107
Teslenko Anna.....	109
RESEARCH ON THE RISK OF TYPE 2 DIABETES MELLITUS IN STUDENT	109
Yakovlieva Anastasiia, Semikhat Iryna	110
ALLERGY TO UNUSUAL ITEMS	110
Zemlianitsyna L.V., Oliinyk O.Yu.....	112
POST-COVID LONG-HAULERS	112
Zhuravok Artem	114
AN INTEGRATED APPROACH TO THE TREATMENT OF PATIENTS WITH LESIONS OF THE BRONCHOPULMONARY SYSTEM IN CYSTIC FIBROSIS (CLINICAL CASE).....	114
NEUROSCIENCES	116
Amanjot Kaur, Ravkiran Kaur	117
Alzheimer's disease.....	117
Chupina Vilena.....	118
FEATURES OF PSYCHOPATHOLOGICAL CHANGES IN LATENT HEPATIC ENCEPHALOPATHY	118
Haleta Yana, Matsievska Yulia	119
ASSESSMENT OF STRESS AND BURNOUT IN HEALTH CARE PROFESSIONALS	119
Hutsal Katerina, Hutsal Semen	121
EFFICIENCY OF COMPLEX THERAPY OF AGORAPHOBIA	121
Kachurina Maria, Kaisyna Sofiia	122
BRACHIAL PLEXUS PAIN	122
Kaploukh Olha	124
PSYCHOEDUCATION AS A COMPONENT OF FAMILY ADAPTATION OF PATIENTS WITH DEMENTIA	124
Kondratenko Anastasiia	125
MILD COGNITIVE IMPAIRMENT IN PATIENTS WITH TYPE 1 AND TYPE 2 DIABETES MELLITUS	125
Mironova Anna	127
NON-DRUG TREATMENT OF MYOFASCIAL PAIN SYNDROMES.....	127
Roohi Pandit, Walaa Houssein Moussawi.....	129
FEATURES OF THE CLINIC OF SCHIZOAFFECTIVE DISORDER, DEPRESSIVE TYPE	129
Rudenko Serhii.....	130
Evaluation of the distribution of various cognitive domains impairment in patients with acute ischemic stroke	130
Svitlana Nevzorova	131
CONSTITUTIONAL FEATURES OF PATIENTS WITH THYROTOXICOSIS	131
Uchechi Blessing Azuwiki	132
SOME ASPECTS OF THE ATTITUDE OF MEDICAL STUDENTS TO MENTAL PATHOLOGY ...	132
Varuni Ravishankar Upadhya	133
AMYOTROPHIC LATERAL SCLEROSIS	133
Zelenska Kateryna, Tolstaia Tetiana	136
THE IMPORTANCE OF PSYCHOTHERAPY IN THE COMPLEX TREATMENT OF ANXIETY DISORDERS IN INTERNALLY DISPLACED PERSONS	136